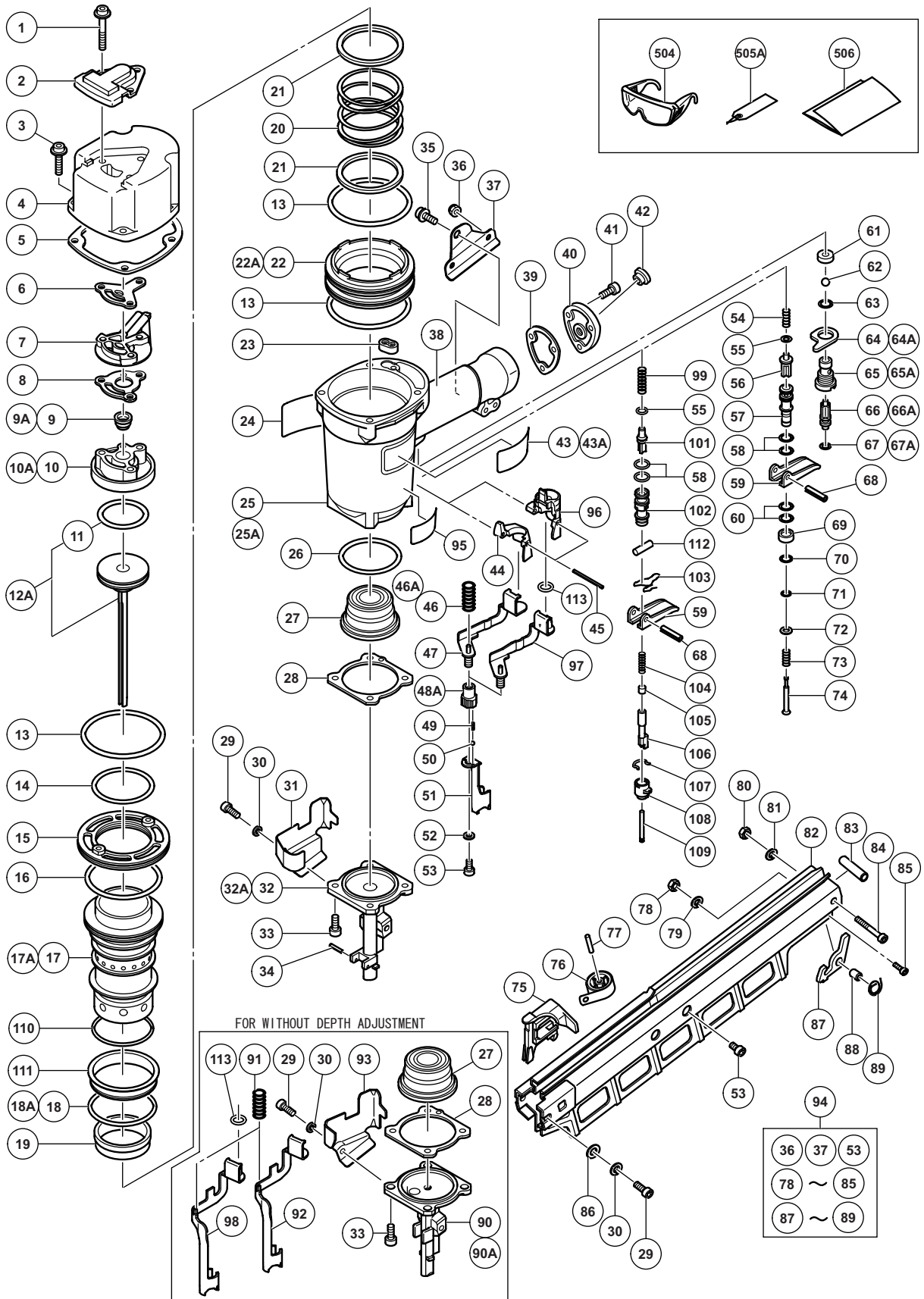


PNEUMATIC TOOL PARTS LIST

STRIP NAILER Model NR 83A2

2011·6·27
(E2)



PARTS

NR 83A2

ITEM NO.	CODE NO.	DESCRIPTION	NO. USED	REMARKS
1	883-509	HEX. SOCKET HD. BOLT (W/FLANGE) M6 X 45	3	
2	877-330	TOP COVER	1	
3	883-507	HEX. SOCKET HD. BOLT (W/SP. WASHER) M6 X 25	4	
4	877-324	EXHAUST COVER	1	
5	877-325	GASKET (B)	1	
6	877-329	GASKET (F)	1	
7	877-328	EXHAUST PIECE	1	
8	877-854	GASKET (C)	1	
* 9	884-110	EXHAUST VALVE (ORANGE)	1	
* 9A	887-774	EXHAUST VALVE	1	FOR MODEL (Y), (S1)
* 10	877-307	HEAD CAP AND GASKET SET	1	INCLUD. 8
* 10A	887-769	HEAD CAP AND GASKET SET	1	INCLUD. 8 FOR MODEL (Y), (S1)
11	877-368	O-RING (1AP-48)	1	
12A	885-915	PISTON ASS'Y	1	INCLUD. 11
13	877-316	O-RING (S-90)	3	
14	877-312	CYLINDER O-RING (I.D 63.1)	1	
15	877-318	CYLINDER PLATE	1	
16	877-313	CYLINDER O-RING (I.D 79.3)	1	
* 17	884-068	CYLINDER	1	
* 17A	887-762	CYLINDER	1	FOR MODEL (Y), (S1)
* 18	877-314	CYLINDER O-RING (I.D 69.3)	1	
* 18A	878-863	O-RING (S-70)	1	FOR MODEL (Y), (S1)
19	877-317	CYLINDER RING	1	
20	877-321	CYLINDER SPRING	1	
21	877-322	BASE WASHER	1	
* 22	877-310	CYLINDER GUIDE	1	
* 22A	887-763	CYLINDER GUIDE	1	FOR MODEL (Y), (S1)
23	877-327	GASKET (G)	1	
24	884-070	WARNING LABEL	1	
* 25	883-506	BODY ASS'Y	1	INCLUD. 38
* 25A	887-773	BODY ASS'Y	1	INCLUD. 38 FOR MODEL (Y), (S1)
26	877-315	CYLINDER O-RING (I.D 63.9)	1	
27	883-511	PISTON BUMPER (B)	1	
28	877-334	GASKET (A)	1	
29	878-426	HIGH TENSION BOLT M6 X 18	2	
30	949-455	SPRING WASHER M6 (10 PCS.)	2	
31	884-061	GUARD (A)	1	
* 32	884-060	NOSE	1	FOR WITH DEPTH ADJUSTMENT TYPE
* 32A	887-770	NOSE	1	FOR MODEL (Y)
33	883-492	NYLOCK HEX. SOCKET HD. BOLT M8 X 22	4	
* 34	949-518	ROLL PIN D3 X 18 (10 PCS.)	1	FOR WITH DEPTH ADJUSTMENT TYPE
35	883-505	NYLOCK BOLT (W/FLANGE) M8 X 16	1	
36	963-837	NYLON NUT M6	2	
37	884-066	HANDLE ARM (B)	1	
38		GRIP RUBBER	1	(SUPPLIED WITH ITEM NO. 601, 602)
39	877-331	GASKET (D)	1	
40	878-311	CAP	1	
41	949-658	HEX. SOCKET HD. BOLT M5 X 18 (10 PCS.)	3	
42	872-035	DUST CAP	1	
* 43		NAME PLATE	1	

PARTS

NR 83A2

ITEM NO.	CODE NO.	DESCRIPTION	NO. USED	REMARKS
* 43A		NAME PLATE	1	FOR MODEL (Y), (S1)
44	884-119	GUARD (B)	1	
45	884-025	ROLL PIN D3 X 45	1	
* 46	884-067	SPRING	1	FOR WITH DEPTH ADJUSTMENT TYPE
* 46A	887-841	SPRING	1	FOR MODEL (Y)
* 47	884-063	PUSHING LEVER (B)	1	FOR WITH DEPTH ADJUSTMENT TYPE
* 48A	326-799	ADJUSTER	1	FOR WITH DEPTH ADJUSTMENT TYPE
* 49	880-175	ADJUSTER SPRING	2	FOR WITH DEPTH ADJUSTMENT TYPE
* 50	959-148	STEEL BALL D3.175 (10 PCS.)	2	FOR WITH DEPTH ADJUSTMENT TYPE
* 51	884-062	PUSHING LEVER (A)	1	FOR WITH DEPTH ADJUSTMENT TYPE
* 52	880-081	WASHER	1	FOR WITH DEPTH ADJUSTMENT TYPE
* 53	949-657	HEX. SOCKET HD. BOLT M6 X 12 (10 PCS.)	3	FOR WITH DEPTH ADJUSTMENT TYPE
* 53	949-657	HEX. SOCKET HD. BOLT M6 X 12 (10 PCS.)	2	FOR WITHOUT DEPTH ADJUSTMENT TYPE
54	875-643	PLUNGER SPRING	1	
55	874-436	O-RING (P-4)	1	
56	884-113	PLUNGER (A)	1	
57	884-111	VALVE BUSHING	1	
58	884-112	O-RING (I.D 10.7)	2	
59	876-203	TRIGGER	1	
60	872-645	O-RING (P-9)	2	
61	878-734	VALVE PACKING	1	
62	875-645	URETHANE BALL (C) D7.14	1	
63	875-638	O-RING (S-12)	1	
* 64	875-644	VALVE PLATE	1	
* 64A	887-771	VALVE PLATE	1	FOR MODEL (Y), (S1)
* 65	877-335	TRIGGER VALVE BUSHING	1	
* 65A	887-839	TRIGGER VALVE BUSHING	1	FOR MODEL (Y), (S1)
* 66	878-121	TRIGGER PLUNGER	1	
* 66A		TRIGGER PLUNGER	1	FOR MODEL (Y), (S1)
* 67	874-820	PLUNGER O-RING	1	
* 67A	887-840	O-RING	1	FOR MODEL (Y), (S1)
68	949-866	ROLL PIN D3 X 30 (10 PCS.)	1	
69	884-116	VALVE SLEEVE (A)	1	
70	876-316	O-RING (S-7)	1	
71	878-723	PLUNGER O-RING	1	
72	949-424	WASHER M5 (10 PCS.)	1	
73	884-115	PLUNGER (B) SPRING	1	
74	884-114	PLUNGER (B)	1	
75	877-393Z	NAIL FEEDER	1	
76	878-422	RIBBON SPRING	1	Sub 878-421
77	878-418	NEEDLE ROLLER	1	
78	876-465	NYLON NUT M4	1	
79	949-453	SPRING WASHER M4 (10 PCS.)	1	
80	877-371	NYLON NUT M5	1	
81	949-454	SPRING WASHER M5 (10 PCS.)	1	
82	884-065	MAGAZINE	1	Sub 884-570
83	876-550	SLEEVE	1	
84	949-824	HEX. SOCKET HD. BOLT M5 X 45 (10 PCS.)	1	
85	949-650	HEX. SOCKET HD. BOLT M4 X 15 (10 PCS.)	1	
86	877-402	WASHER	1	

